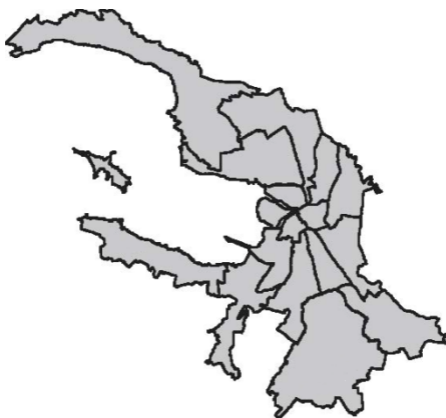


## Saint-Petersburg



2018 data on some of indicators are preliminary and subject to further revisions. For some indicators, data of 2017 are adjusted in comparison with the data published earlier.

The following designations are used in the pocketbook:

–	not applicable
...	not available
0,0	nil or less than half the final digit shown
x	impossibility of comparison
t.	times

In some cases rounding may lead to inconsistencies between the sum of constituent parts and the total.

Reproduction of state statistics authorities content is authorized, provided the source is acknowledged.

Catalogue code 11000719  
E-mail: [pcs@stat78.spb.ru](mailto:pcs@stat78.spb.ru)  
<http://petrostat.gks.ru>  
© Petrostat, 2019

## Historical and geographical information

Founded 27 May 1703

St. Petersburg 1703-1914

Petrograd 1914-1924

Leningrad 1924-1991

The original name of St. Petersburg was returned on 6 September 1991.

Capital of Russia in 1712-1918 (except 1728-1731).

An independent administrative-territorial unit since December 1931.

Federal city according to the constitution of the Russian Federation of 1993.

Geographical coordinate 59°57' north latitude  
30°19' east longitude

Area of St. Petersburg is 1,4 thousand sq. km

Population density 3,6 thousand person per 1 sq. km

Main river – Neva (32 km long within the city limits).

The city of Saint-Petersburg is divided into 18 districts and 111 municipal entities.

### Climate (2018)

Average annual temperature +7,0°C

Average temperature in the coldest month -7,7°C

Average temperature in the warmest month +20,8°C

Annual precipitation 530 mm

## Main socio-economic indicators in 2018

	Billion rubles	% of 2017
Population size (end of the year), thousand persons	5383,9	100,6
Accrued average monthly wages of employees:		
nominal, rubles	60421	112,4
real	x	109,1
Unemployed, officially registered by State employment service (end of the year), thousand persons	12,0	101,7
Gross Regional Product (2017 year)	3866,4	100,2 <sup>1</sup>
Turnover of organizations (at current prices)	13458,9	114,6
Industrial production index	x	105,0
Volume of works performed by economic activity "construction"	572,9	100,3
Dwelling put in place, thousand sq. m	3950,3	111,7
Volume of communication services (at current prices)	147,9	104,5
Retail trade turnover	1412,4	103,4
Public catering turnover	78,2	106,2
Volume of market services rendered to population	538,5	104,5
Fixed capital investments	747,4	104,3
Consumer price index for goods and services (December 2018 to December 2017), %	x	103,9

<sup>1</sup> In % of 2016 year.

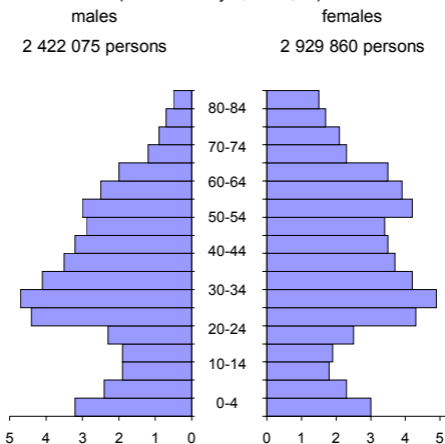
## Population

### Population size (as of January 1)

	2016	2017	2018
Total, thousand persons	5281,6	5351,9	5383,9
males	2386,8	2422,1	2437,9 <sup>1</sup>
females	2894,8	2929,8	2946,0 <sup>1</sup>
Percentage of total population, %			
males	45,2	45,3	45,3
females	54,8	54,7	54,7

<sup>1</sup> Preliminary data.

### Age and sex structure of population (as of January 1, 2018, %)



At the beginning of 2018 the median male age was 38,20 years, female age – 43,83 years; the life expectancy at birth in 2018 for males was 71,39 years, for females – 79,90 years.

**Vital statistics**  
(per 1 000 population)

	<b>2016</b>	<b>2017</b>	<b>2018</b>
Births	13,8	12,5	11,9
Deaths	11,7	11,4	11,1
Natural increase	2,1	1,1	0,8
Marriages	9,6	9,9	8,2
Divorces	4,8	4,7	4,8

**Population by districts**  
(as of January 1, thousand persons)

	<b>2017</b>	<b>2018</b>	<b>2019</b>
districts			
Admiralteiskiy	163,8	163,6	161,9
Vasileostrovskiy	209,2	209,6	208,7
Vyborgskiy	503,0	509,6	518,7
Kalininskiy	535,4	538,3	533,6
Kirovskiy	336,7	336,4	336,2
Kolpinskiy	187,6	188,7	191,9
Krasnogvardeiskiy	351,6	357,9	357,5
Krasnosel'skiy	369,8	383,1	397,6
Kronshtadtskiy	44,5	44,4	44,3
Kurortny	76,1	76,9	78,1
Moskovskiy	343,9	350,6	354,5
Nevskiy	511,5	519,4	527,9
Petrogradskiy	135,6	134,8	131,4
Petrodvortsovy	138,1	140,9	143,2
Primorskiy	555,4	565,4	568,5
Pushkinskiy	193,2	208,7	218,0
Frunzenskiy	406,0	401,4	395,0
Tsentrал'ny	220,2	222,2	216,9

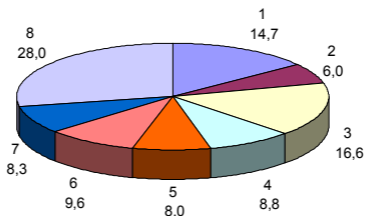
## Labor market

### Average number of employees in organizations<sup>1</sup> in 2018

	Thousand persons	% of 2017
Total	2082,7	101,3
including by economic activity:		
agriculture, forestry, fishing	4,2	84,2
mining and quarrying	2,4	101,0
manufacturing	305,7	104,3
electricity, gas, steam and air conditioning supply	33,4	99,3
water supply, sewerage, waste management and remediation activities	17,3	84,7
construction	124,2	96,9
wholesale and retail trade; repair of motor and motorcycle vehicles	346,7	99,6
transportation and storage	182,4	105,1
accommodation and food service activities	57,5	111,0
information and communication	87,5	116,9
financial and insurance activities	56,5	104,5
real estate activities	78,9	93,4
professional, scientific and technical activities	166,0	86,2
administrative and support service activities	91,2	121,5
public administration and defence; compulsory social security	90,0	105,4
education	200,3	93,4
human health and social work activities	171,9	112,8
arts, entertainment and recreation	49,4	107,3
other service activities	17,1	85,0

<sup>1</sup> Groupings by activities represent a set of actual activities carried out by organizations, regardless of their core (main) business; data for 2017 when calculated a relative indicators – using core (main) business.

**Structure of average  
number of employees in organizations  
by economic activity  
in 2018 (%)**



- 1 – manufacturing
- 2 – construction
- 3 – wholesale and retail trade;  
repair of motor and motorcycle vehicles
- 4 – transportation and storage
- 5 – professional, scientific and technical activities
- 6 – education
- 7 – activities in the field of health and social services
- 8 – provision of other types of services

**Unemployed officially registered  
in State employment service  
(end of the year)**

	2016	2017	2018
Total, thousand persons	11,8	11,8	12,0
Unemployment rate as a percentage of labor force <sup>1</sup> , %	0,4	0,4	0,4

<sup>1</sup> 2016 – persons at age 15-72 years old, 2017-2018 – at age of 15 years and older.

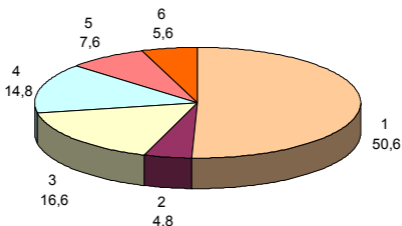


## Living standards

### Money income and consumer expenditure

	2016	2017	2018
Average per capita money income (annually) thousand rubles	494,0	501,6	513,9
Consumption expenditure, per capita (annually) thousand rubles	355,1	383,6	401,2
Real money income, % of the previous year	97,2	98,6	100,4

### Structure of personal consumption expenditure in 2018 (%)



- 1 –purchase of goods
- 2 –savings<sup>1</sup>
- 3 –payment for services
- 4 –obligatory dues and contributions
- 5 –currency purchase
- 6 –payments for goods (services) using credit cards abroad

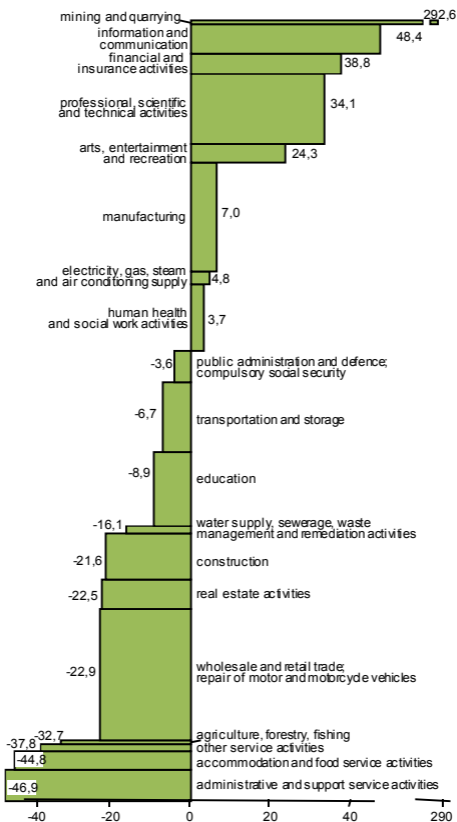
<sup>1</sup> Savings in deposits and bonds, funds in bank accounts of individual entrepreneurs, loan debts, acquisition of real estate and etc.

## Accrued average monthly wages of employees<sup>1</sup> in 2018

	Nominal, ruble	Real, % of 2017
Total	60421	109,1
including by economic activity:		
agriculture, forestry, fishing	40684	109,0
mining and quarrying	237201	96,1
manufacturing	64631	107,7
electricity, gas, steam and air conditioning supply	63318	103,5
water supply, sewerage, waste management and remediation activities	50703	105,4
construction	47356	106,0
wholesale and retail trade; repair of motor and motorcycle vehicles	46604	104,7
transportation and storage	56346	105,4
accommodation and food service activities	33325	93,6
information and communication	89657	110,3
financial and insurance activities	83843	101,1
real estate activities	46840	102,9
professional, scientific and technical activities	80995	107,0
administrative and support service activities	32099	98,3
public administration and defence; compulsory social security	58251	104,8
education	55048	107,2
human health and social work activities	62663	111,8
arts, entertainment and recreation	75105	113,1
other service activities	37590	110,6

<sup>1</sup> Groupings by activities represent a set of actual activities carried out by organizations, regardless of their core (main) business; data for 2017 when calculated a relative indicators – using core (main) business.

**Structure of average number of employees in organizations and declining between the average monthly wages by economic activity and the average level in St. Petersburg in 2018 (%)**



**Number of pensioners<sup>1</sup>**  
(as of January 1, thousand persons)

	<b>2017</b>	<b>2018</b>	<b>2019</b>
Total	1468	1482	1508
Including those receiving pensions:			
old-aged	1315	1330	1351
disabled	61	57	57
loss of a breadwinner	18	19	20
social	71	72	77

<sup>1</sup> Pensioners registered at the Pension Fund of the Russian Federation for Saint-Petersburg and Leningrad region.

**Average pension<sup>1</sup>**  
**as of January 1, 2019**

	<b>Rubles</b>	<b>Real pension, % of January 1, 2018</b>
Total	15616	100,1
old-aged	16350	100,3
disabled	9573	99,9
loss of a breadwinner	10965	105,9
social	8300	97,3

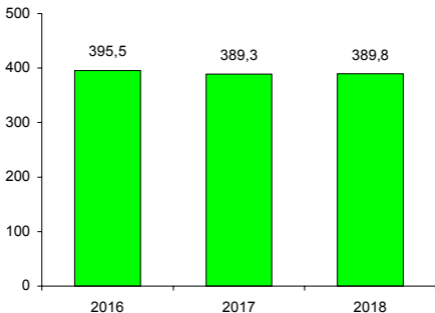
<sup>1</sup> According to the real-time of the Pension fund of the Russian Federation for Saint-Petersburg and Leningrad region.

**Subsistence minimum<sup>1</sup>**  
(average per capita, rubles monthly)

	2016	2017	2018
Population, total	10408	10737	10987
of which by socio-demographic groups of population			
working-age population	11435	11806	12041
pensioners	8332	8573	8928
children	10034	10349	10719

<sup>1</sup> It is calculated on the basis of data established by the Government of St. Petersburg for quarters I–IV.

**Ratio of average per capita money income of population to subsistence minimum (%)**



## Foodstuffs consumption

(per person/annually, kilos)

	2015	2016	2017
Meat and meat products <sup>1</sup> including edible offal	70	72	73
Milk and dairy products <sup>1</sup>	312	308	305
Eggs <sup>1</sup> , pieces	317	321	325
Bread and bakery products	87	88	88
Potatoes <sup>1</sup>	68	67	69
Vegetables <sup>1</sup>	84	84	84
Vegetables oil	11	11	11
Sugar	37	37	37

<sup>1</sup> The data using results of the 2016 Russian Agricultural Census.

## Housing stock<sup>1</sup>

(end of the year)

	2016	2017	2018
Apartments – total, thousand	2068,1	2145,8	2209,2
Total area of dwellings, million sq. m	128,3	133,1	136,8
Average living floor area per one inhabitant, sq. m	24,4	24,9	25,4

<sup>1</sup> Information is being developed from data of local self-governing bodies for incomplete coverage of accounting units.

## Social Field

### Preschool education and childcare institutions (end of the year)

	2016	2017	2018
Institutions – total	1192	1196	1206
Children – total, thousand persons	254,6	264,1	274,8
Number of children per 100 places in pre-school	109	111	112

### Primary, lower secondary and upper secondary education institutions<sup>1</sup> (beginning of academic year)

	2016/17	2017/18	2018/19
<b>State and municipal institutions</b>			
Education institutions	686	687	711
Pupils in primary, lower secondary and upper secondary education, thousand persons	440,5	463,2	486,2
<b>Private institutions</b>			
Education institutions	54	57	56
Pupils in primary, lower secondary and upper secondary education, persons	5,6	6,3	6,3

<sup>1</sup> Here and on the page 16 – according to the data of the Ministry of Education and Ministry of Science and Higher Education of the Russian Federation.

**State and municipal  
skilled workers, employees and mid-career  
professionals education institutions<sup>1</sup>**

(beginning of academic year)

	<b>2016/17</b>	<b>2017/18</b>	<b>2018/19</b>
Education institutions	110	110	107
Students – total, thousand persons	89,0	93,2	94,9
Graduated mid-career professionals - total <sup>2</sup> , thousand persons	19,7	20,3	21,8

<sup>1</sup> Including institutions of higher education and branch campuses.

<sup>2</sup> In 2016, 2017 and 2018, respectively.

**Higher education institutions**

(beginning of academic year)

	<b>2016/17</b>	<b>2017/18</b>	<b>2018/19</b>
<b>State and municipal institutions</b>			
Education institutions	43	43	43
Students – total, thousand persons	268,5	270,8	274,4
Graduated bachelors, specialists, masters – total <sup>1</sup> , thousand persons	65,4	58,5	59,6
<b>Private institutions</b>			
Education institutions	34	29	29
Students – total, thousand persons	25,0	22,7	21,9
Graduated bachelors, specialists, masters – total <sup>1</sup> , thousand persons	13,1	8,7	6,8

<sup>1</sup> In 2016, 2017 and 2018, respectively.



## Public health and recreation organizations

	2016	2017	2018
<b>Hospitals<sup>1</sup> (end of the year)</b>			
Number of hospitals	118	118	...
Per 10 000 population:			
hospital beds <sup>2</sup>	83,6	84,5	...
doctors	77,5	80,7	...
mid-level medical personnel	110,7	110,8	...
<b>Health resorts and recreation facilities</b>			
Total	38	60	48
Number of beds in them, thousand	10,0	11,6	10,7
Number of patients served, thousand persons	165	234	216
<b>Children health camps<sup>3</sup></b>			
Total	211	213	177
Children accommodated there during summer, thousand persons	71,5	56,4	30,5

<sup>1</sup> Excluding institutions subordinated to the Leningrad region authorities, located on the territory of St. Petersburg; excluding micro businesses.

<sup>2</sup> 24-hour hospital beds (without day hospital beds).

<sup>3</sup> 2016, 2017 – by a place of registration of the legal entity, 2018 – by the place of the actual activity.

## Culture and leisure<sup>1</sup>

(end of the year)

	2016	2017	
<b>Public libraries</b>			
Public libraries – total <sup>2</sup>	200	221	222
Library stock:	53,7	54,4	54,5
total, million copies			
average per			
100 population, copies	1016	1016	1012
Visitors, thousand	1203	1214	1261
<b>Clubs and related establishments</b>			
Culture and leisure organizations – total	27	35	35
Number of seats, thousand	13,9	20,3	21,3
<b>Professional theatres<sup>2</sup></b>			
Professional theatres – total	38	38	38
Spectators, thousand persons	4,5	4,4	4,4
<b>Museums<sup>3</sup></b>			
Museums – total	55	69	70
Visits to museums, thousand	23,8	26,4	26,4

<sup>1</sup> According to the data of the Ministry of culture of Russian Federation on 19.06.2019 (<https://stat.mkrf.ru/indicators/>).

<sup>2</sup> Theatres of the Ministry of culture of Russian Federation, including theatres subordinated to the Leningrad region authorities located on the area of Saint-Petersburg.

<sup>3</sup> 2016 – Museums of the Ministry of culture of Russian Federation.

## Hotels and similar accommodation facilities

(end of the year)

	2016	2017	2018
Hotels and similar accommodation facilities – total	470	785	938
Number of beds, thousand	56,9	76,9	82,5
Persons accommodated in hotels and similar accommodation facilities, thousand	3611	5011	5452
of which:			
russian citizens	2336	3349	3459
foreign citizens	1275	1662	1992

## Turnover of organizations

### Turnover of organizations by economic activity in 2018

	<b>Billion rubles</b>	<b>% of 2017</b>
Total	13458,9	114,6
including by economic activity:		
agriculture, forestry, fishing	9,2	97,7
mining and quarrying	50,1	106,9
manufacturing	4107,8	127,1
electricity, gas, steam and air conditioning supply	387,2	103,9
water supply, sewerage, waste management and remediation activities	66,8	112,5
construction	521,5	108,3
wholesale and retail trade; repair of motor and motorcycle vehicles	5898,5	111,6
transportation and storage	806,1	110,9
accommodation and food service activities	106,2	111,1
information and communication	377,7	107,1
real estate activities	358,2	105,7
professional, scientific and technical activities	398,7	98,3
administrative and support service activities	92,7	110,6
public administration and defence; compulsory social security	3,8	118,2
education	53,4	105,5
human health and social work activities	153,8	112,6
arts, entertainment and recreation	43,5	117,0
other service activities	23,6	116,1

## Industry

### Industrial production index<sup>1</sup>

	2016 <sup>1</sup>	2017	2018
Industrial production index	103,9	105,7	105,0
including by economic activity			
mining and quarrying	143,9	106,3	101,5
manufacturing	103,7	105,8	105,2
Including:			
food products	125,6	106,1	103,9
beverages	101,5	95,6	120,0
tobacco products	120,4	85,4	100,6
wearing apparel	102,1	106,0	85,9
leather and related products	95,4	99,8	115,6
wood and of products of wood and cork, except furniture; manufacture of articles of straw and plaiting materials	48,0	1,8 p.	33,8
paper and paper products	100,9	104,4	111,5
printing and reproduction of recorded media	118,1	100,5	93,6
coke and refined petroleum products	87,6	97,7	110,6
chemicals and chemical products	105,7	90,9	109,0
basic pharmaceutical products and phar- maceutical preparations	2,2 p.	105,0	110,4
rubber and plastic products	118,9	1,6 p.	101,2
other non-metallic mineral products	91,2	99,3	98,1
basic metals	79,6	107,5	96,2
fabricated metal products except machinery and equipment	83,7	92,1	85,2
computers, electronic and optical products	100,4	89,3	98,7
electrical equipment	108,5	99,9	116,8
machinery and equipment n.e.c.	58,4	104,7	115,7
motor vehicles, trailers and semi-trailers	87,4	118,6	110,3

			ending
	<b>2016<sup>†</sup></b>	<b>2017</b>	<b>2018</b>
other transport equipment	103,8	96,7	132,1
furniture	78,8	104,3	107,7
other manufacturing	85,4	141,8	102,8
electricity, gas, steam and air conditioning supply	105,6	103,2	100,8
water supply, sewerage, waste management and remediation activities	104,4	110,1	111,1

<sup>†</sup> 2016 year – results of a retrospective recalculation of production indices in accordance with the transition from the year 2017 to OKVED2.

## Production of basic products in 2018

	2018	% of 2017
Meat and edible offal, thousand ton	35,1	100,1
Meat preparations (containing meat) subfrozen and frozen, thousand ton	37,0	75,5
Fish processed and canned, thousand ton	123,3	93,9
Whole-milk products (converted into whole milk), thousand ton	156,8	107,9
Cheese and cottage, thousand ton	13,7	92,9
Products fermented (excluding cottage cheese products), thousand ton	79,4	93,5
Flour, thousand ton	453,1	103,9
Bakery products of non-durable storage, thousand ton	236,6	96,8
Bakery products for long-term storage, low humidity, semi-finished bakery products, thousand ton	68,1	131,2
Confectionery products, thousand ton	251,6	107,2
Lumber, thousand m <sup>3</sup>	32,4	118,5
Materials for paint and varnish, thousand ton	193,2	106,1
Medical preparations, billion rubles	19,4	102,1
Plastic window blocks, thousand m <sup>3</sup>	442,3	96,8
Blocks and other products, prefabricated, for buildings and structures of cement, of concrete or of artificial stone, thousand m <sup>3</sup>	0,7	62,7
Concrete ready for pouring, ready-mixed concrete, million m <sup>3</sup>	2,7	111,8
Constructions and details of constructions from ferrous metals, thousand ton	329,7	2,0 p.
Electricity, billion kWh	23,3	108,0
Steam and hot water, million Gcal	48,6	102,1

## Construction

### Volume of works in construction activity<sup>1</sup>

	2016	2017	2018
Total, billion rubles	626,1	517,5	572,9
% of the previous year	100,4	75,6	100,3

<sup>1</sup> Including building works that were made using own resources.

### Commissioning of residential buildings

	2016	2017	2018
Constructed apartments, thou.	57,4	69,5	78,2
Total commissioned area of dwellings:			
thousand sq. m	3116	3536	3950
% of previous year	102,8	113,5	111,7

### Commissioning of social and cultural facilities

	2016	2017	2018
Pre-school educational institutions, places	2695	2810	2505
General educational schools, pupil places	3675	1650	4425
Polyclinics (out-patient facilities), visits per shift	220	420	350

## Transport and communications

### Transportation of goods and freight turnover

	2016	2017	2018
<b>Transportation of goods, mln. ton</b>			
Total	268,4	280,7	...
including road transport <sup>1</sup>	8,6	7,5	10,7
<b>Freight turnover, bln. ton-km</b>			
Total <sup>2</sup>	169,5	180,8	173,3
including road transport <sup>1</sup>	1,6	2,3	2,9

<sup>1</sup> Commercial transportation by organizations of all economic activities; excluding small businesses.

<sup>2</sup> The data on turnover of goods given without railway transport. JSC Russian Railways does not distribute the volume of freight and passenger turnover by constituent entities of the Russian Federation.

### Passenger transportation and passenger turnover of public automobile transport

	2016	2017	2018
Passenger transportation, mln. persons	545,8	574,8	587,7
Passenger turnover, mln. passenger-km	3236,9	3417,9	3507,2

### Passenger transportation by urban passenger transport<sup>1</sup>

	2016	2017	2018
Passenger transportation, mln. persons	1589	1582	1621
of which public transport bus (inner-city transportation)	523	544	570

<sup>1</sup> Excluding small businesses.



### Length of transport lines and urban rolling stock of passenger transport<sup>1</sup>

	2016	2017	2018
Operational length of transport routes, km:			
tramway lines	237	232	226
trolley-bus lines	324	324	324
subway lines	114	114	119
Rolling stock, units:			
buses	6452	6152	5958
tram cars	787	771	770
trolley-buses	635	698	682
subway cars	1681	1787	1889

<sup>1</sup> Excluding small businesses.

### Volume of communication services<sup>1</sup>

	2016	2017	2018
Total, billion rubles	107,5	141,5	147,9
% of previous year	93,5	131,6	104,5

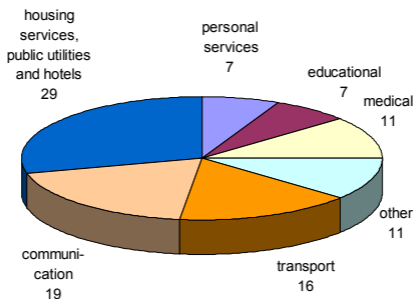
<sup>1</sup> At current prices; according to the data of the Ministry of digital Development, Communications and Mass Media of the Russian Federation.

## Trade and services

### Consumer market

	2016	2017	2018
Retail trade turnover			
billion rubles	1234,3	1326,3	1412,4
% of previous year	100,1	103,4	103,4
Turnover of catering			
billion rubles	67,7	72,4	78,2
% of the previous year	113,0	104,5	106,2
Volume of market services			
billion rubles	447,4	494,1	538,5
% of the previous year	101,7	102,8	104,5
including personal services			
billion rubles	34,5	36,4	39,4
% of previous year	97,2	101,8	105,8

### Structure of market services in 2018 (%)



## Finances

### Consolidated budget of St. Petersburg<sup>1</sup> (billion rubles)

	2016	2017	2018
Revenue	485,9	522,2	589,5
Expenditure	505,2	565,1	579,7
Surplus, deficit (-)	-19,3	-42,9	9,8

<sup>1</sup> At current prices.

### Structure of revenue and expenditure of the consolidated budget (%)

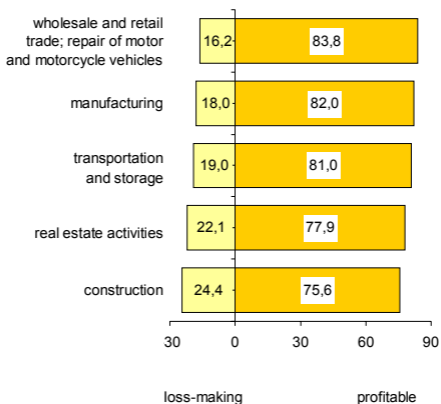
	2016	2017	2018
<b>Revenue</b>			
Total	100	100	100
of which:			
corporate income tax	26,0	27,2	27,2
individual income tax	41,0	42,7	43,6
excises	4,4	3,4	3,4
revenue from use of state and municipal property	4,9	3,8	3,1
gratuitous transfers	4,9	4,0	4,2
<b>Expenditure</b>			
Total	100	100	100
of which:			
state security and law enforcement	0,7	0,6	0,7
housing and communal utilities	10,5	11,0	11,0
social-cultural arrangements	59,1	59,0	61,9
including:			
on education	23,3	23,9	25,2
on culture and cinema	3,6	3,7	3,8
on mass media	0,3	0,3	0,4
on public health	15,2	16,1	13,1
on physical culture and sports	4,0	2,1	2,5
on social policy	12,6	12,8	17,0

## Financial activities of organizations<sup>1</sup>

	2016	2017	2018
Balanced financial results (profit less loss), billion rubles	925,1	753,0	751,8
Number of loss-making organizations:			
total	430	504	595
% of total number of organizations	16,3	18,5	19,4
Amount of loss, billion rubles	118,1	206,1	244,9

<sup>1</sup> Excluding small businesses, banks, insurance enterprises and budget-funded establishments.

### Ratio of profitable and loss-making organizations by economic activity in 2018 (%)



# Investments<sup>1</sup>

## Investments in fixed capital by economic activity in 2018

	Million rubles	In % of 2017
Total	553635	99,9
including by economic activity:		
agriculture, forestry, fishing	91	78,7
mining and quarrying	147	99,3
manufacturing	80877	109,3
electricity, gas, steam and air conditioning supply	36560	81,2
water supply, sewerage, waste management and remediation activities	9501	90,7
construction	45424	86,4
wholesale and retail trade; repair of motor and motorcycle vehicles	31707	105,9
transportation and storage	115267	139,2
accommodation and food service activities	2617	99,7
information and communication	23587	118,5
financial and insurance activities	16929	58,0
real estate activities	104153	80,6
professional, scientific and technical activities	26949	63,5
administrative and support service activities	4448	1,8 p.
public administration and defence; compulsory social security	18254	2,0 p.
education	17103	2,1 p.
human health and social work activities	7147	101,9
arts, entertainment and recreation	12270	90,0
provision of other types of services	604	2,3 p.

<sup>1</sup> Excluding small businesses

**Investments in fixed capital  
by sources of financing (%)**

	<b>2016</b>	<b>2017</b>	<b>2018</b>
Total	100	100	100
Including:			
own funds	64,2	57,4	61,2
raised funds	35,8	42,6	38,8
of which:			
budget funds (funds of consolidated budget)	16,0	21,7	17,9
including:			
federal budget	5,8	5,0	6,0
budgets of constituent entities of the Russian Federation	9,7	16,7	11,9

## Prices and tariffs

### Consumer and producer price indices

(December to December of the previous year, %)

	2016	2017	2018
Consumer price index	105,2	103,7	103,9
Producer price index of industrial goods	106,4 <sup>1</sup>	100,7	105,2
Agricultural producer price index	102,6	105,8	111,1
Aggregated price index for investment goods and services	108,5	98,7	104,7

<sup>1</sup> Results of a retrospective recalculation of production indices in accordance with the transition from the year 2017 to OKVED2.

### Consumer price indices (tariffs) for goods and services

(December to December of the previous year, %)

	2016	2017	2018
All goods and services	105,2	103,7	103,9
Food products	105,4	101,9	104,0
including:			
foodstuffs	105,1	101,4	104,5
alcoholic beverages	107,9	104,9	100,9
Non-food products	106,1	103,2	104,3
including:			
wearing apparel and underwear	109,0	103,9	102,8
leather, textile and combined footwear	107,1	105,3	102,4
tobacco products	119,7	112,0	110,3
Services	103,8	106,5	103,3
including:			
housing and public utilities	109,2	107,5	104,5

**Rate of price increases**  
(December to December of previous year, %)



**Price indices in the fuel market**  
(December to December of the previous year, %)

	2016	2017	2018
Gasoline	103,1	106,7	109,4
A-92	103,0	107,7	109,7
A-95	103,2	106,0	109,7
A-98	...	...	106,6
Diesel fuel	105,3	109,1	117,0



**Price indices in dwelling market**  
(IV quarter to IV quarter of previous year, %)

	2016	2017	2018
<b>Primary market</b>			
All apartments	108,0	103,7	106,5
standard	108,1	104,0	107,5
high quality apartments	107,8	98,1	109,6
luxury apartments	107,3	108,4	98,4
<b>Secondary market</b>			
All apartments	99,4	100,1	106,5
low quality apartments	100,0	89,6	93,6
standard	99,5	102,2	108,2
high quality apartments	98,9	98,9	100,5
luxury apartments	100,0	100,0	–

**Prices in dwelling market in IV quarter 2018**  
(thousand rubles per sq. m of total floor space)



**Average consumer prices for products  
included in the conditional (minimal) food  
product set, in December**  
(rubles per kilo)

	2016	2017	2018
Beef (except boneless meat)	325,3	330,9	347,2
Pork (except boneless meat)	246,5	242,2	263,4
Mutton (except boneless meat)	372,8	390,3	431,6
Chicken	136,4	121,5	149,2
Frozen fish, non-cut	192,9	170,9	180,9
Herring salted	227,9	226,5	224,1
Butter	621,6	664,4	699,1
Vegetable oil	131,4	122,3	124,7
Margarine	187,8	191,4	194,9
Whole milk pasteurized, fat status 2,5-3,2%, per liter	62,0	64,6	67,5
Sour cream	168,7	177,9	195,4
Non-fat curds	298,2	318,0	334,6
Rennet cheeses, hard and soft	438,6	454,3	485,8
<i>Chicken</i> eggs, for ten pieces	67,1	56,2	71,1
Sugar	50,2	37,7	47,4
Biscuits	163,1	163,2	169,0
Caramel	227,7	232,3	231,3
Salt	12,2	12,0	13,1
Black tea	740,2	746,9	822,9
Pepper black	2349,3	2365,9	2299,6
Wheat flour	40,6	41,0	41,9
Rye and rye-wheat bread	68,4	72,9	71,5
Bread and bakery products from wheat flour of I and II grades	70,6	76,5	79,1
White rice	92,0	90,7	93,2
Millet	44,2	37,9	66,0
Pea and bean	51,9	46,4	54,99
Vermicelli	102,6	101,1	101,8
Potatoes	23,6	25,1	26,95
Cabbage	20,1	16,7	28,97
Onion	25,9	24,1	30,9
Carrots	26,5	25,4	32,5
Cucumbers	138,1	151,1	131,9
Apples	90,6	95,6	93,2

## External trade <sup>1</sup>

### External trade turnover (billion US dollars)

	2016	2017	2018
Turnover	37,1	44,6	49,2
export	15,8	21,8	26,5
import	21,3	22,8	22,7
Balance of external trade turnover	-5,6	-1,0	3,8

<sup>1</sup> According to the North-West customs administration of the Russian Federation.

### External trade turnover by countries in 2018 (million US dollars)

	External trade turnover		of which	
	total	% of total	export	import
Total	49198	100	26452	22746
of which: non-CIS countries	44912	91,3	23339	21573
of which:				
Netherlands	7204	14,6	6923	281
China	6766	13,8	1652	5114
Germany	4256	8,6	2263	1993
USA	3114	6,3	1792	1322
Republic of Korea	1551	3,2	168	1383
Japan	1471	3,0	142	1329
Italy	1383	2,8	608	775
Франция	1239	2,5	633	606
Finland	1166	2,4	313	853
United Kingdom of Great Britain and Ireland	1105	2,2	674	431
Турция	1011	2,1	657	354
India	966	2,0	624	342
CIS countries	4286	8,7	3113	1173
of which				
Belarus	2335	4,7	1572	763
Kazakhstan	915	1,9	792	123

## Contents

Historical and geographical information .....	3
Main socio-economic indicators in 2018.....	4
Population .....	5
Labour market .....	7
Living standards .....	9
Social field .....	15
Turnover of organizations .....	19
Industry.....	20
Construction.....	23
Transport and communications .....	24
Trade and services .....	26
Finances .....	27
Investments.....	29
Prices and tariffs.....	31
External trade.....	35

Compiled by Department  
of Federal State Statistics Service  
of Russian Federation in  
St. Petersburg and Leningrad Region  
197376, St. Petersburg, Professora Popova str., 39  
Fax: +7 (812) 234-06-36, E-mail: [pcs@stat78.spb.ru](mailto:pcs@stat78.spb.ru)  
Responsible for the issue: Anna I. Filippova.  
Telephone: +7 (812) 234-00-31

Printed by Petrostat printing-office  
Signed for printing 25.06.2019  
Circulation 50 copies. Order N 89.